

# LIGHT AND SHADE

A Newsletter published by Pictorial Photographers of America, New York, N.Y.

Vol. 95, Number 4

www.ppa-photoclub.org

April 2011

## *April Calendar*

### *Tuesday, April 12: "Portraits – Faces" Competition*

Judge: Barbara Koppelman  
Time: 7:00 p.m. – 9:00 p.m.  
Place: St. Peter's Rectory

Ms. Koppelman is a photo editor, archivist, and researcher who consults with photographers to edit, organize and market their work, and upgrade their business practices. She explores fresh directions for their careers, curates shows, evaluates or builds their websites, finds stock agencies, and develops ways to promote, publish and market their images. She has worked with photographers of every range, age, and specialty from beginners to those with international reputations.

She has been photo editor for the following publications: *Radio City Music Hall, A Legend Is Reborn*, a history and culture of Radio City Music Hall created for special guests at opening night and subsequent sale.

*Pop Culture, 100 Stories from Pepsi's First 100 Years*—the anniversary book celebrating Pepsi for PepsiCo.

*To Give Them Light*—photographs of Roman Vishniac.

*From Alice to Ocean*—photographs by Rick Smolan. Re-edited this coverage shot originally for *National Geographic* documenting a woman's solo journey through the Australian deserts.

*The Journal of Myth & Tradition*—art and photography editor for this journal by Parabola,

Three guidebooks for Girl Scouts of America.

Ms. Koppelman has also been the supervisor of the slide library at the Museum of Fine Arts in Boston where she has built a library of 130,000 slides, documented the collections.

#### **Make Note of:**

1. Deadline for winning image submissions for the photo-page is mid-night of the Tuesday following the competition.
2. The Portfolio Competition takes place on May 10, 2011.
3. The Annual Business meeting takes place on June 7, 2011.
4. The Awards Dinner takes place on June 14, 2011.

Ms. Koppelman has been a judge, curator, workshop presenter, and portfolio reviewer.

Ms. Koppelman has a M.A. (History of Art and Museum Studies) from the University of Michigan, and a B.A. (American History, Art History and Studio Art) from Syracuse University.

### *Tuesday, April 26: Program*

Speaker: Doug Schwab  
Time: 7:00 p.m. – 9:00 p.m.  
Place: St. Peter's Rectory

Mr. Schwab is a Brooklyn based photographer. His current work is driven by his passion for photographing people and printing these pictures in the platinum/palladium medium and the gum bichromate method, both of which are 19th Century photographic techniques.

Lately he has added gelatin pigment prints, also known as carbon prints, to the processes in his repertoire.

He was a self-taught photographer working as a staff photographer for the major defense contractor ITT when he first took classes in photography. It was at this time that he studied with George Tice and Lisette Model.

For many years he was a Leica enthusiast, but about 15 years ago he began working creatively with view cameras, that prior to that had always been a commercial photography tool for him. This was a direct result of his interest in historical photographic processes.

He continues to work with an 8 x 10 view camera, and lately he also uses digital negatives generated by smaller cameras. He shows his work in galleries and alternative spaces throughout New York City and Brooklyn where he is an Assistant Professor of Photography at Brooklyn College.



# LIGHT AND SHADE

Published monthly October through June

## **Editor**

Richard Trapani  
Editorial Office  
147-10 41st Avenue  
Flushing, New York 11355-1277



## **President**

Kathryn Buck

## **1st Vice-President**

Don Sichler

## **Treasurer**

Krista Hannesson  
kshannesson@aol.com

## **Secretary**

Richard Trapani

## **Publicity and Membership**

Kathryn Buck  
(212) 243-0273  
Email: blsspks@aol.com  
www.ppa-photoclub.org

## **Website Coordinator**

Don Sichler  
Email: photoreality@verizon.net

## **Desktop Publisher**

Richard Trapani

## **Pictorial Photographers of America**

Organized in 1916  
Affiliated with Photographic Society of America



The sole aim and constant endeavor of PPA is the promotion of art in photography and the making of better pictures.

## **Meeting Place:**

St. Peter's Rectory  
346 West 20th Street  
New York, NY 10011

Meetings are held the second and fourth Tuesday of each month and start promptly at 7:00 p.m.

## **President's Message**

Hello, All –

It's April again, and ever since our 90th Anniversary exhibit at Westbeth, I'm particularly aware of that event whenever April rolls around. This year, it was heralded by an unexpected call from Theresa King, an e-mail re: Westbeth from former gallery manager Jack Dowling, and a return to their Community Room for a presentation on beautifying urban spaces by Lynden Miller—all on the same day! Miller is a painter and landscape designer who for the last thirty years or so has worked on restoring many of the most well-known park and rundown areas in the city—The Conservatory Garden in Central Park, Bryant Park, Wagner Park, Hanover Park (met the Queen!), the northern end of the Broadway Mall. Her message on the effect of beautiful spaces, especially those involving public access to garden sites, on the mood and civility of the populace, as well as on the surrounding economy, was fascinating and uplifting. And the images she shared—many “before and after” images—would make a fascinating exhibit in their own right on the transformation of space. My only regret is that many of the reproductions in her book, *Parks, Plants, and People: Beautifying the Urban Landscape* (Norton, 2009), are rather too small to do them justice. I recommend the book highly to all gardeners among us, especially those working with public spaces; there is also advice on fund-raising, volunteers and advocacy. For the non-gardener, it offers itself as a good New York story. I believe as photographers in the City, we are all especially aware of and grateful for the beauty and effect of these spaces, and of the wonderful changes they have undergone since the fiscally dark days of the 1970s. It was wonderful to meet and hear from someone whose own vision was instrumental in those transformations.

On our own immediate front, we had an interesting March. Our special theme competition, “Pictorialism,” was another exercise in our efforts to achieve a better understanding of both traditional and contemporary Pictorialism and of our own heritage. What struck me during the evening's competition, judged by Ed Coppola, was just how broad the label Pictorialism can be and how challenging it will probably remain to find a hard-and-fast definition—not so much of what it was, but certainly with regard to contemporary work and to individual images—that will achieve easy consensus. It was interesting to see the ways in which some members explored new kinds of imagery and when asked to look at their own body of work from this single perspective, which images were selected. Once we are again able to update the images on the website homepage, we can share some of these there.

Jessica Raimi's presentation of a selection of her work over the last 40 years was intriguing in its breadth and evolution, and we look forward this month to the images of Doug Schwab on the 26th, in addition to our regular theme competition, this season

*(cont. on page 3)*

### ***President's Message (cont.):***

"Portraits—Faces," on the 12th. Think creatively! Schwab's work also features photographs of people (a true theme with us these last few months) and he specializes in 19th century printing methods and materials—gum bichromate, platinum, and palladium, and I hope he will have some insights to share with us on Pictorialism then and now as well.

I look forward to seeing you all—and your images—on our two Tuesdays in April.

—Kathryn

### ***Exhibits & Events***

*The ICP-Bard MFA Thesis Exhibition*, by members of the graduating class of 2011 at the School of the International Center of Photography through May 22, 2011. Nine members of the class, Arielle Bier, Ame Curtiss, Hernease Davis, Olimpia Ferrari, Curtis Hamilton, Michelle Leedy, Garret Miller, Clark Nelson, and Sayaka Taninokuchi exhibit their qualifying work. Their images explore virtually every aspect of the medium ranging from traditional black-and-white to the new technology of digital imaging. The students examine the multiple forms through which ideas are translated and communicated by photography.

The School of the International Center of Photography is located at 1114 Avenue of the Americas at 43rd Street, in New York City. Hours: 10:00 a.m. – 6:00 p.m. Mon. through Sun., 212-857-0045.

*Nicholas Vreeland: Return to the Roof of the World*, at the Leica Gallery from April 22nd through June 4, 2011. This exhibition follows the journey of photographer and Buddhist monk, Nicholas Vreeland, on his return to Tibet after 50 years. Black-and-white photographs depict his journey on horseback to the "roof of the world." Included in the exhibit are color photos of some of the greatest lamas made by Vreeland in the 1970's.

The Leica Gallery is located at 670 Broadway two blocks north of Bleecker Street. Hours: Tues. thru Sat., 2:00 p.m. – 6:00 p.m., 212-777-3051.

*Lynn Goldsmith at the Bowery*, at the Morrison Hotel Gallery. This exhibit features hand picked selections from Lynn Goldsmith's extensive archive of photographs with a special emphasis on five of the most iconic artists in the business, Bruce Springsteen, Keith Richards, Bob Dylan, U2, and Bob Marley.

Lynn Goldsmith is an award winning portrait and fine art photographer. Her work has appeared on over 100 album covers as well as magazine covers like: *Rolling Stone*, *Life*, *Newsweek*, *Time*, *People*, *Interview*, *Sports Illustrated*, to name a few.

The Morrison Gallery is located at 124 Prince Street, New York. Hours: 12:00 – 7:00 p.m. Wed. – Sat. 12:00 – 6:00 p.m. Sun., 212-677-2253.

### ***B & H Event Space***

B & H offers an array of free seminars and lectures by professional photographers from around the world. You can self-register online to guarantee a seat. Below are a few of the seminars that could be of interest to club members. The B & H website has more details for each topic.

*Finding Photographic Style with David Brommer*  
Event Type: Photography,  
Date: Wednesday, April 13, 2011, 11:00 a.m. – 1:00 p.m.

*Intro to the Digital SLR (DSLR) - Choosing and Using Digital Cameras with David Brommer*  
Event Type: Photography,  
Date: Thursday, April 14, 2011, 2:00 p.m. – 5:00 p.m.

*Night Visions with Gabriel Biderman*  
Event Type: Photography,  
Date: Thursday, April 28, 2011, 3:00 p.m. – 5:00 p.m.

### ***Member News***

*Don Sichler* has a solo exhibit, *First Impressions*, opening March 13th, at the Hoboken, New Jersey, Historical Museum, 1301 Hudson Street, Hoboken. Opening reception 2:00 – 5:00 p.m. on March 13th. The exhibit lasts through April 24th. For more details and hours: [www.hobokenmuseum.org](http://www.hobokenmuseum.org) or call (201) 656-2240.

*Ricki Stuart* is recovering in Florida from an illness, but is well enough to be taking pictures of flowers and birds. Contact the editor of *Light and Shade* if you wish to correspond with her.

*Marion Green* submits another poem to provoke our thoughts for the "Portrait—Faces" competition:

*Faces young  
faces old.  
Faces sweet  
faces bold.  
All around us  
we can find,  
different faces  
one of a kind.  
Do your best  
the mood to capture,  
whether sad or whether rapture.*

### ***Digital Image Submissions***

Bob Himmel has requested that digital image entries for both competitions and critiques be submitted according to the following deadline schedule:

May 10th, Portfolio Wed., May 6th  
Please cooperate!

### ***Quotation of the Month***

*"Complicated equipment and lights and various other items of hardware are enough, in my mind, to prevent the 'birdie' from ever coming out."*  
—Henri Cartier Bresson

## PPA 2010-2011 Calendar

<i>Date</i>	<i>Event</i>
October 12	Season Opener Party, Pictorialism Review
October 26	Competition
November 16	Member Critique
November 23	Program
December 7	Competition
January 11	Competition
January 25	Program
February 8	Member Critique: "Pictorialism"
February 22	Program
March 15	Competition: Theme "Pictorialism"
March 22	Program
April 12	Competition: Theme Night, "Portraits –Faces"
April 26	Program
May 10	Competition: Portfolio Night
May 24	Program
June 7	Annual Business Meeting
June 14	Annual Awards Dinner

### *Competition Rules (October 2010)*

1. All competitions, except as noted in the yearly program, are held at the first meeting of each month from October through May. The President may reschedule a competition to the second meeting of a given month by notifying members at least 14 days in advance.
2. Judges will assign a score between 6 and 9 for each entry. A score of 9 is an Award and will receive 3 competition points. A score of 8 is an Honorable Mention and will receive 2 competition points. A score of 7 is a Merit and will receive 1 competition point. Scores of 6 receive no competition points. Scores will be assigned regardless of the number of photographers entered. Images with a score of 7 or 6 will be allowed re-entry.
3. A member is permitted to enter up to 50% of their season entries, in a particular medium (*excluding traditional slides*) with images taken prior to becoming a member, with the following exception. New members may enter any amount of their season entries with images taken prior to becoming a member during their first club season.
4. **Categories:** There are *three* competition categories, "Prints," "Projected Digital Images," and "Traditional Film Slides."
5. **Entries:** A member may enter a total of *nine* images in a competition, but no more than *three* in a particular category. The title of all entries will be announced to the judge prior to him or her scoring the image.
6. **Prints:** Every print must have a title and the maker's name on the back for identification purposes and an indication of orientation.
  - 6a. Prints must be mounted on firm board, no larger than 16"x20".
  - 6b. A print may be entered up to three times. If a print has won an Award or Honorable Mention in any season, it may not be entered again at any time. See "Exceptions"—Portfolio Night Rule below.
7. **Projected Digital Images:** Digital Images must be titled, be in JPEG format, and may be digitally "enhanced" to any extent by any photo imaging software. Maximum width is 1024 *and* maximum height is 768 pixels. Entries *must* be made initially with a camera, and be submitted no later than *48 hours* prior to the meeting to the designated member who will prepare them for display.
8. **Traditional Film Slides:** Entries must be camera film images and *not* digital images transferred to film, mounted in 2" x 2" ready mounts, and must be clearly spotted in the *lower left-hand corner* as you hold them for hand viewing. Sandwich entries are permitted. Glass mounted slides will not work in our projector. The maker's name and picture title *must appear* on the mount.
9. **Projected Digital Images** and **Traditional Film Slides** may be entered only twice during the year and once in the new year if they were entered in previous years. If an image in either of these categories has won an Award or Honorable Mention, in any season, it may not be entered again at any time. See "Exceptions"—Portfolio Night Rule below.
10. One "Best Image of the Night," with a score no less than 8, only if there are no 9 scored images, will be selected from each category.
11. **Awards:** The number of awards granted at the end of the season for each category and the portfolio competition will be based on the following scale: *three* awards for a minimum of *six* participants; *two* awards for *four or five* participants; *one* award for *two or three* participants. Three awards being 1st, 2nd, and 3rd place.

#### **Exceptions,**

**Theme Night:** Chairpeople or program committee members may preview entries to assure that they conform to the theme. Makers may be asked to give their rationale to help determine the eligibility of their entry. Please adhere to the given theme. Relevance *plus* photographic merit will count.

**Portfolio Night:** Three images for *each category*, which have been submitted in the present season or non-winners from prior seasons, may be entered.

## ***March Competition Results***

Ed Coppola, Judge

### ***Digital Projected Images***

#### ***Awards***

Sandler, \*"Artichokes"  
Baguio, "Old World" & "Home of David"  
Buck, "Metropolitan Museum Night Snow"  
Gottfried, "Still Life—Pitcher and Strawberries"  
Himmel, R., "Punting on the Avon"  
Indelicato, "Trudge On"  
Raggi, "Autumn View—Burroughs' Road" & "Egret with Lake Reflections"  
Sichler, "Giving Tree"

#### ***Honorables***

Baguio, "Edamame"  
Buck, "Village Rail Shadow Shape" & "Snow Walkers on 5th Avenue"  
Gottfried, "Gehry"  
Himmel, R., "Stop Sign—San Miguel de Allende" & "Rain in Venice"  
Indelicato, "Pending Storm"  
King, "Light on Hudson," "English Village Dorset," & "The Tower of Paris"  
Lewis, "Tibbets' Falls"  
Raggi, "Autumn Waterfall"  
Sandler, "Man on Roof"  
Sichler, "Giving Tree"

#### ***Prints***

##### ***Awards***

King, \*"Le Marais, Paris" & "Driving North to New Hampshire"  
Baguio, "Early Morning," "Dream," & "Chloe"

##### ***Honorables***

Buck, "Near Mycenae" & "Takwa Ruins"  
Brown, "Red, White, and Blue"  
Green, "Sea of Clouds," "Steps of Flowers," & "Moonlight on Water"  
King, "London Girl"  
Indelicato, "We're Best Friends" & "Gothic Tree"

\*Best Category Image of the Night

## ***Traditional Slides***

#### ***Awards***

Buck, \*"Sonoma County"  
Green, "Peggy's Cove, No. 2"

#### ***Honorables***

Buck, "Am Alster" & "The Reader"  
Green, "Sunset" & "Peggy's Cove"  
Slatkin, "Day Lily"  
Trapani, "City Hall Fountain"

## ***Cumulative Scores***

### ***Digital Projected Images***

Baguio	33	Himmel, J.	20
Raggi	30	Lewis	19
Sichler	25	Indelicato	11
Gottfried	24	Safdeye	8
Himmel, R.	24	King	6
Buck	21	Brown	3
Sandler	21	Rosner	2

### ***Prints***

Baguio	32	Stuhl, A.	8
Buck	25	Sichler	7
Himmel, R.	14	Green	6
Brown	13	Indelicato	5
Hannesson, J.	10	Stuhl, J.	5
Himmel, J.	8	Reus	4
King	8		

### ***Traditional Slides***

Slatkin	25
Buck	23
Trapani	22
Baguio	17
Green	7
Hannesson, J.	7
Stuhl, A.	7
Hannesson, K.	6
Stuhl, J.	6

Competition Winners—March 2011

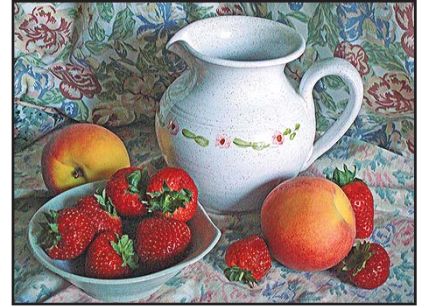
Digital Projected Image Awards



Herb Sandler, *\*Artichokes*



Alex Bagoio, *The Home of David*



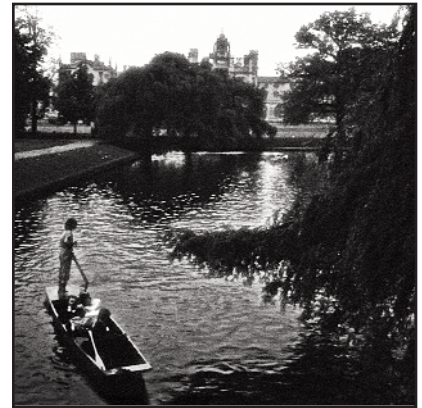
Claire Gottfried, *Still Life—Pitcher and Strawberries*



Barbara Raggi, *Autumn View – Burrough's Road*



Don Sichler, *Giving Tree*



Robert Himmel, *Punting on the Avon*



Kathryn Buck, *Metropolitan Museum –Night Snow*



Frank Indelicato, *Trudge On*

Print Awards



Theresa King, *\*Le Marais, Paris*

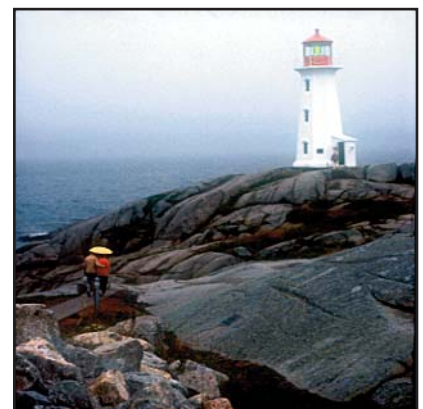
Traditional Slide Awards



Theresa King, *Driving North to New Hampshire*



Kathryn Buck, *\*Sonoma*



Marion Green, *Peggy's Cove*

\*Best Category Image of the Night